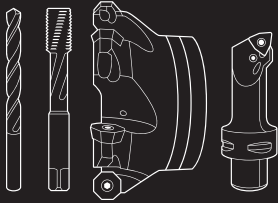


# 2021 Promotion

**Free tool** with insert purchase, details below:



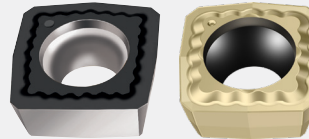
Strong performance  
with four cutting edges

## D3120

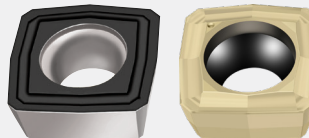
### PROGRAM BENEFITS

- Same insert size for center and periphery insert pocket (operator convenience)
- Maximum process reliability due to easy chip removal
- Best protection against friction due to hardened and polished surfaces
- High stability in all working conditions
- Low cutting tool material costs due to four cutting edges
- Measuring collar for easy drill identification (even when assembled)

Powered by  
**Tiger-tec®Silver**  
**Tiger-tec®Gold**



A57 – The strong geometry



E57 – The universal geometry



E67 – The sharp geometry

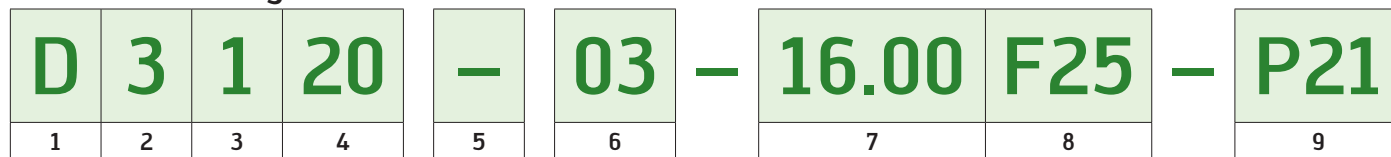


### Promotion Details

Buy any 30 inserts of P284\* style and get the tool for free. Promotion runs from April 12th, 2021 to July 31st, 2021.

Use promo code **DRILLING2021**

## Designation key for Walter drilling tools with indexable inserts



1	2	3	4	5	6	7	8	9
Tool group	Generation	Tool type	Tool type	Unit of Measure	Drilling depth	Cutting diameter/ clamping diameter	Shank type and size, cylindrical	Insert size
D Drilling		<b>1</b> Cylindrical drill <b>2</b> Chamfer drills	<b>20</b> Indexable insert drill with square indexable insert <b>40</b> Indexable insert drill with P600x exchangeable insert	- Metric . Inch	<b>02</b> $2 \times D_c$ <b>03</b> $3 \times D_c$ <b>04</b> $4 \times D_c$		<b>F25</b> 25 mm <b>F32</b> 32 mm <b>F40</b> 40 mm <b>F26</b> 1.000 inch <b>F31</b> 1.250 inch <b>F38</b> 1.500 inch	 <b>P21</b> P284 Size 1 . . . . . . <b>P25</b> P284 Size 7
							A=Cylindrical shank F=Cylindrical shank with flat * shank sizes shown for example only	

## Product range overview of indexable insert drills

Drilling depth	$2 \times D_c$	$3 \times D_c$	$4 \times D_c$
Designation	D3120	D3120	D3120
Dia. range [mm]	16-42	16-42	16-42
Dia. range [in]	-	0.750-1.500	0.750-1.500

## Indexable inserts

Designation	Insert sizes	P		M			K			N		S			Stability of machine, workpiece and clamping arrangement				
		HC	HC	HC	HC	HC	HW	HW	HC	HC	HC	HC							
		WKP25S	WKP35S	WSP45S	WSP45G	WXP40	WSP45S	WSP45G	WXP40	WAK15	WKP25S	WKP35S	WXP40	WK40	WK40	WSP45S	WSP45G	WXP40	
P2840S-.N-A57	1-7	⊗	⊗	⊗	⊗	⊗	⊗	⊗	⊗	⊗	⊗	⊗	⊗	⊗	⊗	⊗	⊗	⊗	⊗
P2840S-.N-E67	1-7	⊗	⊗	⊗	⊗	⊗	⊗	⊗	⊗	⊗	⊗	⊗	⊗	⊗	⊗	⊗	⊗	⊗	⊗
P2841S-.N-A57	1-7	⊗	⊗	⊗	⊗	⊗	⊗	⊗	⊗	⊗	⊗	⊗	⊗	⊗	⊗	⊗	⊗	⊗	⊗
P2841S-.N-E57	1-7	⊗	⊗	⊗	⊗	⊗	⊗	⊗	⊗	⊗	⊗	⊗	⊗	⊗	⊗	⊗	⊗	⊗	⊗
P2841S-.N-E67	1-7	⊗	⊗	⊗	⊗	⊗	⊗	⊗	⊗	⊗	⊗	⊗	⊗	⊗	⊗	⊗	⊗	⊗	⊗

P2840. = Ground Insert  
 P2841. = Pressed Insert  
 A57, E57, E67 are different chip breaker geometries. See Walter Catalog for technical information  
 Some geometry and grade combinations not available in all sizes

HC = Coated carbide  
 HW = Uncoated carbide